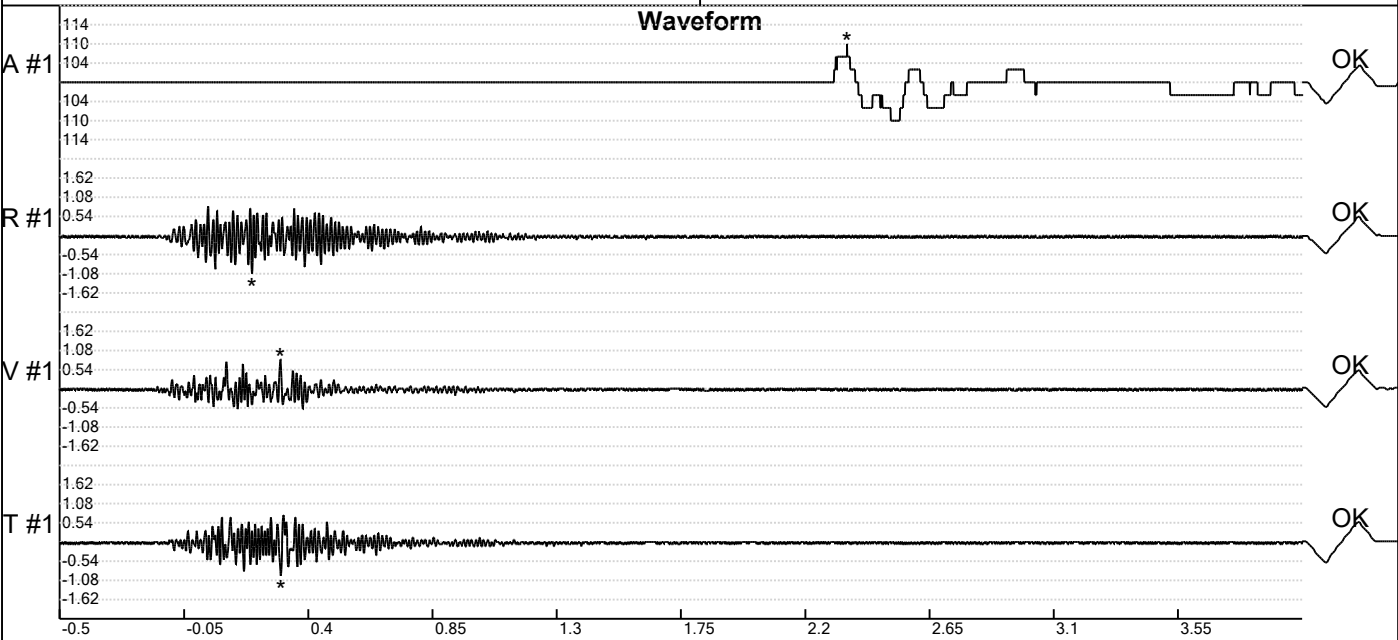


Carrière de BRS
 Comblain -5
 Tir du 29/04/2021
 Sismographe placé au
 261 Halleux
 4710 Comblain-au-Pont

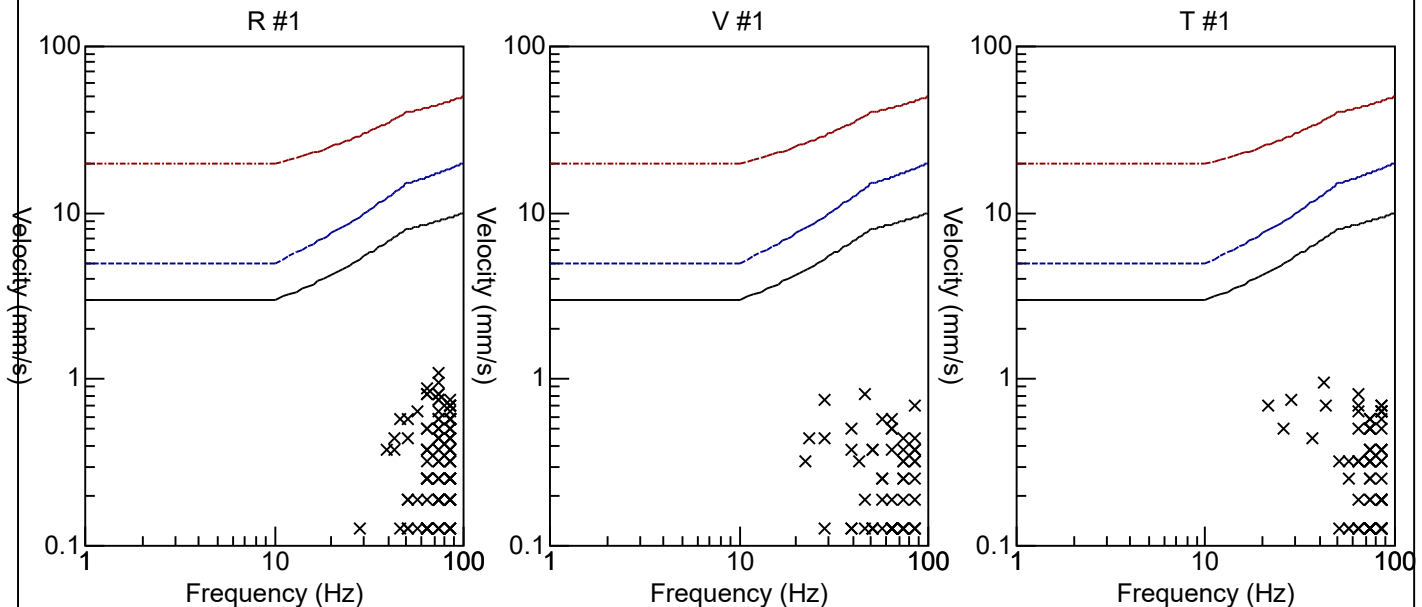
Record: 1789202104291501268.dtb
 Number: 268
 Seismograph: Mini-Seis 1789
 Type of Record: Waveform
 Date: 29-04-21 15:01:00
 Duration: 4.50 Seconds
 Sample Rate: 1024
 Pre-Trigger: 0.5 Seconds
 Seismic Trigger: 0.508 mm/s
 Acoustic Trigger: 142.1 dB
 Seismic Gain: 63.5
 Acoustic Gain: 141.9 dB
 Voltage: 6.5

Peaks and Frequencies
PPV Maximum (Geo #1): 1.08 mm/s
 Acoustic #1: 109.5 dB @ 7.6 Hz (2.351563 s)
 Radial #1: 1.08 mm/s @ 73.1 Hz (0.1962891 s)
 Vertical #1: 0.826 mm/s @ 46.5 Hz (0.2988281 s)
 Transverse #1: 0.953 mm/s @ 42.6 Hz (0.3007813 s)

Graph Information
 Time Range: -0.5 s to 4 s, Intervals: 0.4500 Seconds



Velocity vs. Frequency (DIN 4150-3 Tab 1)

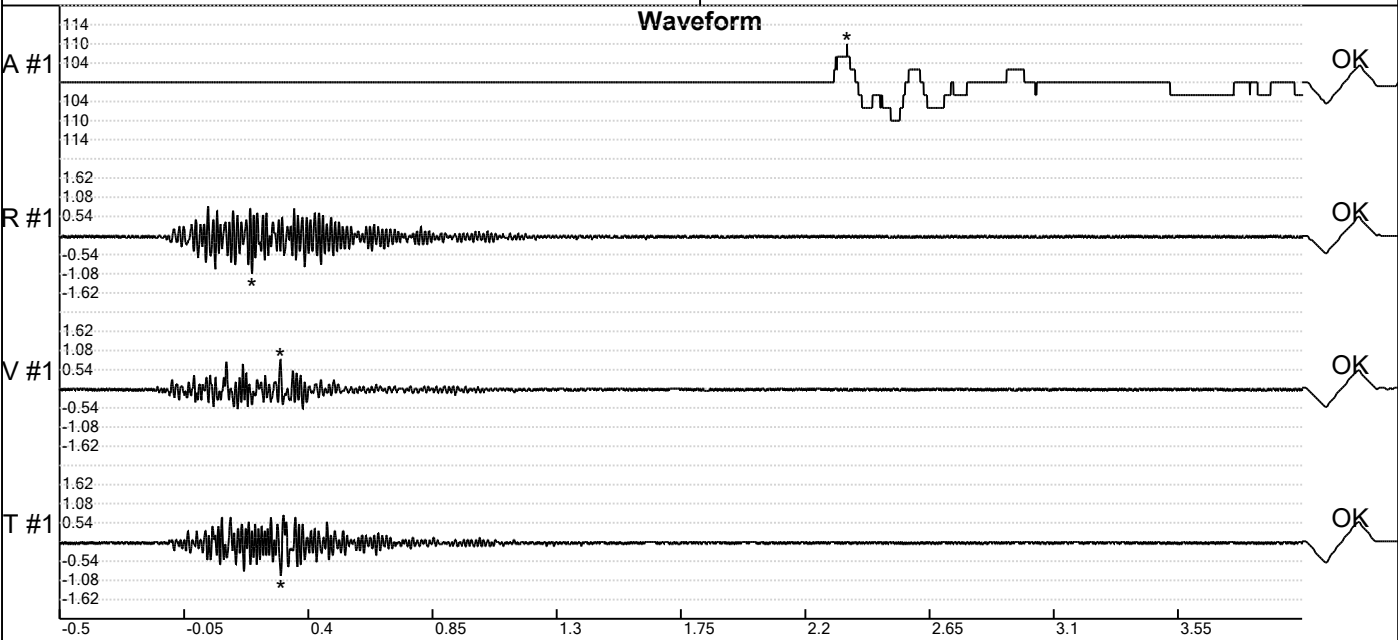


Carrière de BRS
 Comblain -5
 Tir du 29/04/2021
 Sismographe placé au
 261 Halleux
 4710 Comblain-au-Pont

Record: 1789202104291501268.dtb
 Number: 268
 Seismograph: Mini-Seis 1789
 Type of Record: Waveform
 Date: 29-04-21 15:01:00
 Duration: 4.50 Seconds
 Sample Rate: 1024
 Pre-Trigger: 0.5 Seconds
 Seismic Trigger: 0.508 mm/s
 Acoustic Trigger: 142.1 dB
 Seismic Gain: 63.5
 Acoustic Gain: 141.9 dB
 Voltage: 6.5

Peaks and Frequencies
PPV Maximum (Geo #1): 1.08 mm/s
 Acoustic #1: 109.5 dB @ 7.6 Hz (2.351563 s)
 Radial #1: 1.08 mm/s @ 73.1 Hz (0.1962891 s)
 Vertical #1: 0.826 mm/s @ 46.5 Hz (0.2988281 s)
 Transverse #1: 0.953 mm/s @ 42.6 Hz (0.3007813 s)

Graph Information
 Time Range: -0.5 s to 4 s, Intervals: 0.4500 Seconds



Fast Fourier Transform (Amplitude Spectrum)

